

# PERFECT LASER

## DREAM IT • DESIGN IT • DO IT

### Installing the software for your new PLT-3040 / PLT-6040

How to get your laser cutter going for the first time.

For help, call 011 036 6062 or 021 839 5594,  
or send an email to [techsupport@perfectlaser.co.za](mailto:techsupport@perfectlaser.co.za)

Welcome to the new world of laser power!

This document applies to both the PLT-3040 and PLT-6040 lasers. Where there is a difference, it will be clearly shown. Once you have got your laser machine set up and running, it's time to install the software that will allow you to start creating your masterpieces.

Requirements :

1. Windows XP, Vista or Windows 7.
2. CorelDRAW X3 to X7
3. Dongle (that is in the blue bag that comes with your PLT-6040)

Firstly, ensure that you have CorelDRAW installed. The operating software (CorelLaser) that comes with your laser machine will seamlessly plug into CorelDRAW from version 13 (X3) up to version 17 (X7).

Then plug the Dongle into an available USB port, and the communications cable into another available USB port (and the other end to your laser machine's USB port). Switch the laser machine on.

Next, insert the CD that comes in the blue bag with your laser machine. When the Autoplay window pops up, select "Open Folder to View Files". Double-click on the CorelLaser Software folder. (You may have to disable your anti-virus software for the install.)

Next, double-click on the file "CorelLaser 2013.02.exe" - (or later version) and CorelLaser will be installed, adding an icon to your desktop - which must then be used when operating your laser machine.

To get started, double-click on the CorelLaser icon on your desktop. A small window will open in the middle of the screen, the Dongle will be recognised, and CorelDRAW will automatically load.



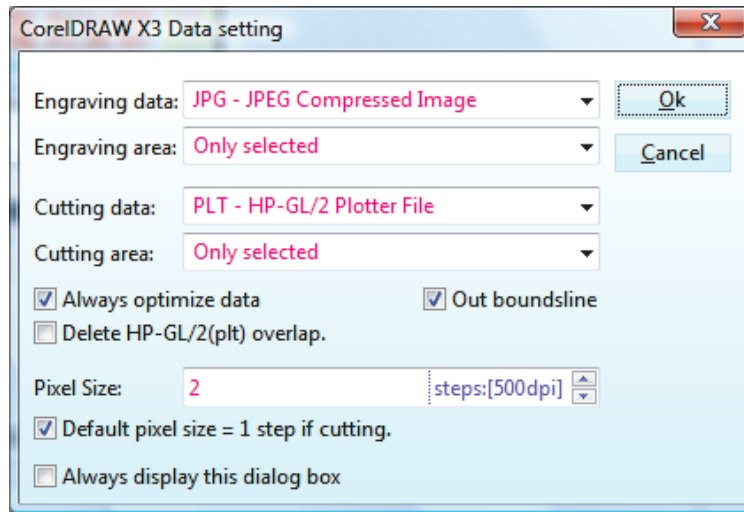
If you have problems at this stage, download TeamViewer from [www.teamviewer.com](http://www.teamviewer.com) and then contact us. We will take remote control of your computer to complete the installation procedure, and get you started.

You will notice a new toolbar on the top right of your CorelDRAW screen. This is the CorelLaser toolbar.




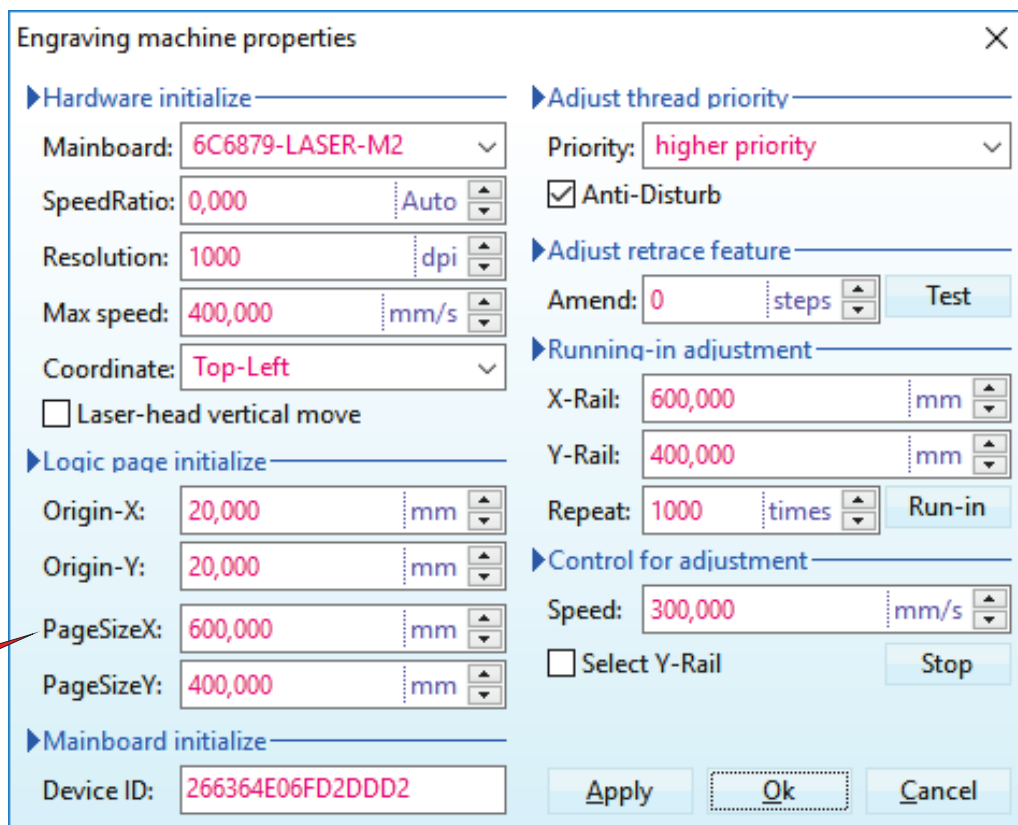
The icons (from left to right) are : CorelDRAW Setting, Engraving, Cutting, Device Initialize, Task Waiting, Reset, Stop and About.

Click on the first (green) icon.  You will see a screen that looks something like this :



Ensure that the variable settings (in Red) are as above, and that the correct boxes are ticked, and click OK.

Next, click on the fourth icon.  You will see a screen that looks something like this :




Again, ensure that the variable settings (in Red) are as above, and that the correct boxes are ticked, and then click OK. Note that for the PLT-3040, set PageSizeX: to 400mm and PageSizeY: to 300mm.

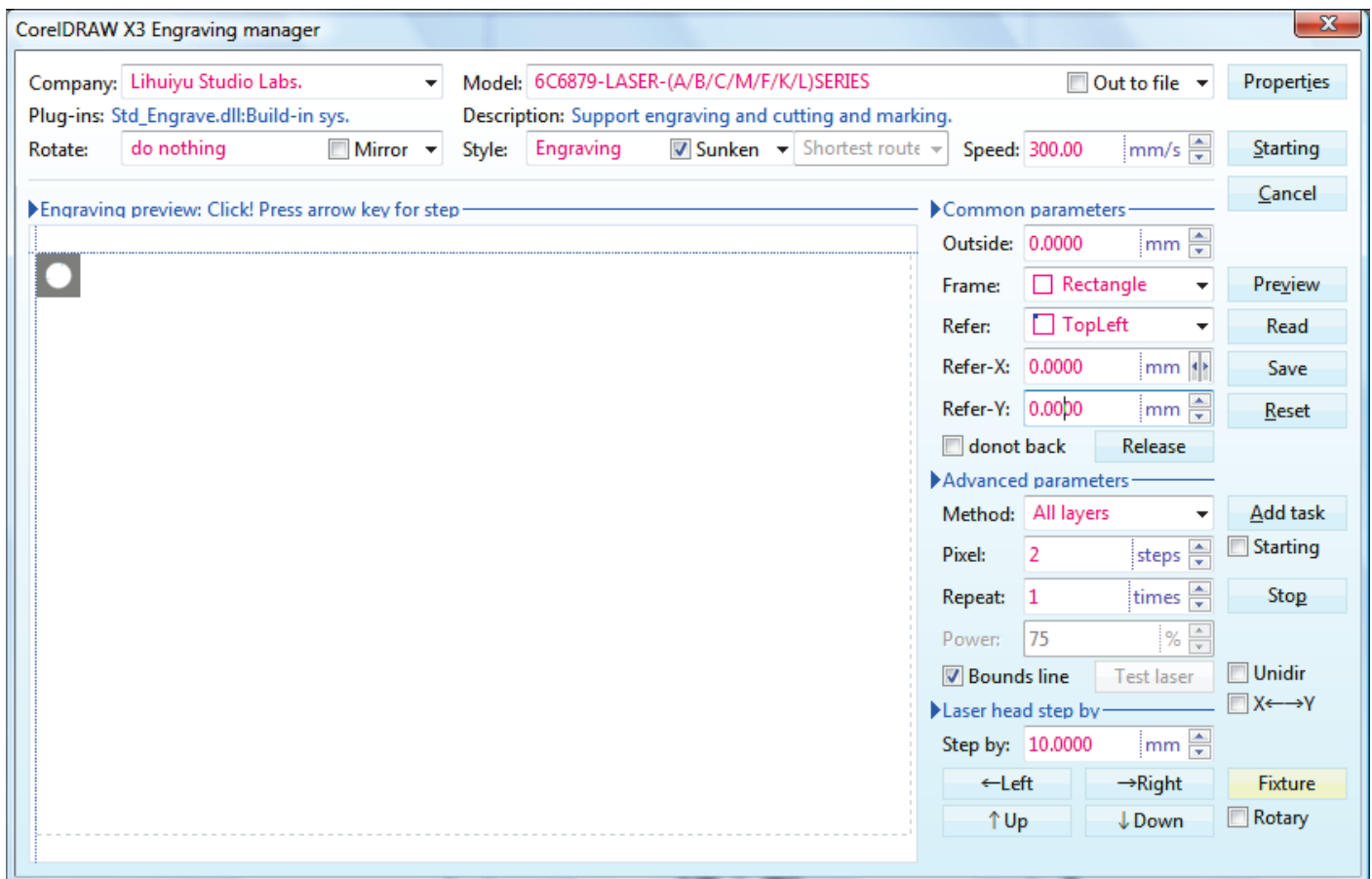
Now you are ready to engrave or cut your first design!

Let's start with something simple.

While holding the ctrl key, draw a 30 x 30 mm square and fill with 50% Black.

Now draw a smaller circle and fill with White. Place in the center of the square.

Select both objects, and then click on the second icon.  You will see a screen that looks something like this :



Again, ensure that the variable settings (in Red) are as above, and that the correct boxes are ticked (or unticked).

Ensure that the laser is on, the water pump is working, the extraction fan is running, and the air-assist pump is running.

Now place your chosen material with the top left corner under the laser head, and use the supplied 20 mm focus tool to check the gap between the head outlet and the material - and adjust if required by moving the Z-axis either up or down.

Assuming you are using wood to engrave on, set the power (on the laser) to 15% for the PLT-6040, or to 20% for the PLT-3040.

(If you are engraving on Perspex or other plastic-type material, set the power to 12% for the PLT-6040, or to 20% for the PLT-3040, and the speed - in the software, top right, next to "Starting" to 400 mm/s)

Locate the emergency STOP switch on the front panel of the laser and be prepared to use it if something goes horribly wrong.

Now, hold your breath and click on "Starting" ...

If all went well, you now have an engraved square with a circle in it.


Well Done!

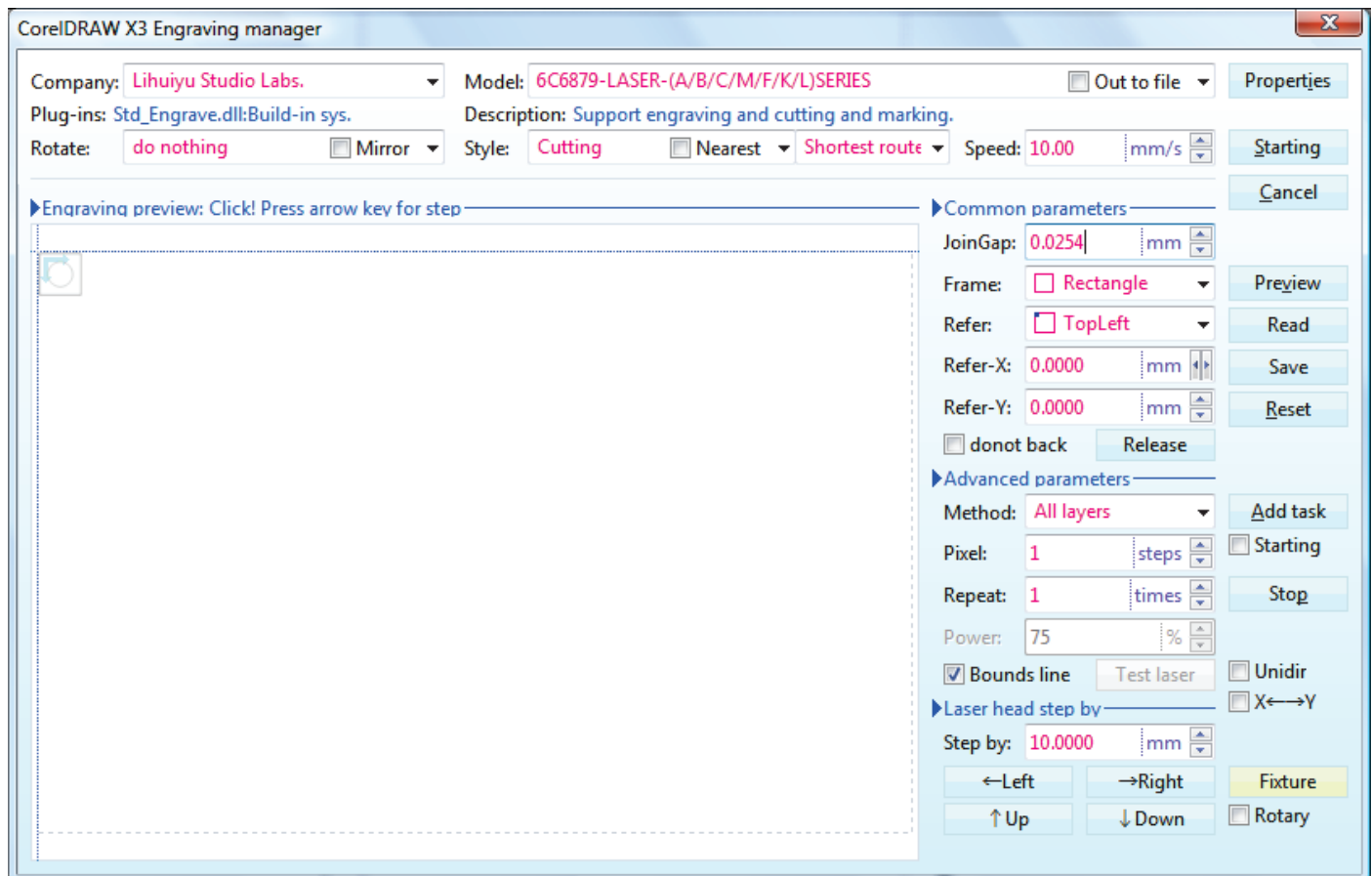
On to cutting.

We'll cut the same thing.

Select your square and circle again, and make both fills "None".

Now make both outlines "Black Hairline".

Click on the third icon.  You will see a screen that looks something like this :



Again, ensure that the variable settings (in Red) are as above, and that the correct boxes are ticked (or unticked). Ensure that the laser is on, the water pump is working, the extraction fan is running, and the air-assist pump is running.

Now place your chosen material with the top left corner under the laser head.

If you are using the same material, simply move the head to the right to start in a clean spot, or else set the X-axis to the right from the software. (In this case, Refer-X: = 40.0000mm).

Use the supplied 20 mm focus tool to check the gap between the head outlet and the material - and adjust if required by moving the Z-axis either up or down.

Assuming you are using 3 mm wood to cut, set the power (on the laser) to 80% for the PLT-6040, or to 95% for the PLT-3040. (If you are cutting Perspex or some other plastic-type material, set the power to 35% for the PLT-6040, or to 60% for the PLT-3040, and the speed - in the software, top right, next to "Starting" to 15 mm/s for the PLT-6040, or to 10 mm/s for the PLT-3040)

Locate the emergency STOP switch on the front panel of the laser and be prepared to use it if something goes horribly wrong.

Now, hold your breath and click on "Starting" ...

If all went well, you now have a cut out square with a round hole in it.

Well Done! You're on your way to becoming an expert!